

MARKING OF PROPERTY CONNECTION SEWERS AND DEAD ENDS

NON-DETECTABLE MARKING TAPE

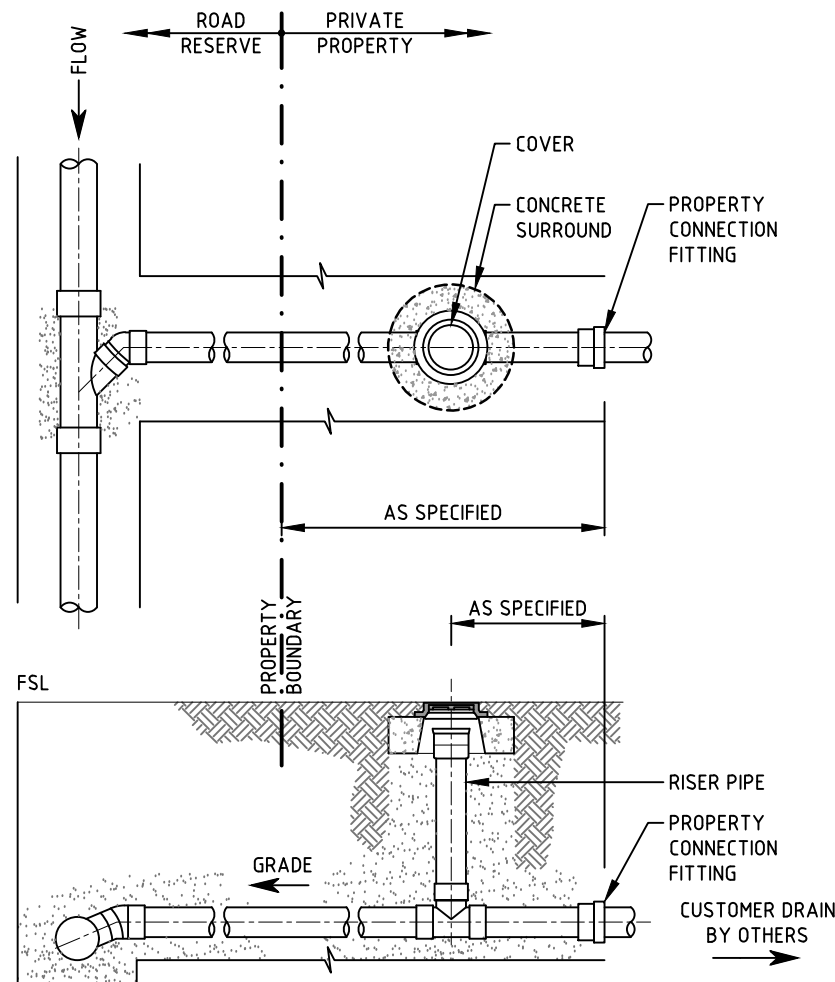
WHERE AN IO IS NOT USED AT THE END OF ANY DEAD END OR PROPERTY CONNECTION, MARK THE LOCATION OF EACH USING NON-DETECTABLE MARKING TAPE. WHEN SPECIFIED, LAY NON-DETECTABLE MARKING TAPE ON TOP OF THE PIPE EMBEDMENT MATERIAL BEFORE TRENCH FILLING.

DETECTABLE MARKING TAPE

LAY DETECTABLE MARKING TAPE ON TOP OF THE PIPE EMBEDMENT MATERIAL BEFORE TRENCH FILLING OR 1 m BELOW THE SURFACE FOR:

- (a) NON-METALLIC PIPELINES, AS SPECIFIED;
- (b) ALL CURVE PIPELINES;
- (c) PROPERTY CONNECTION SEWERS, AS SPECIFIED;
- (d) ALL SEWERS WITHOUT AN UPSTREAM ACCESS POINT; AND
- (e) AT OTHER LOCATIONS AS SPECIFIED.

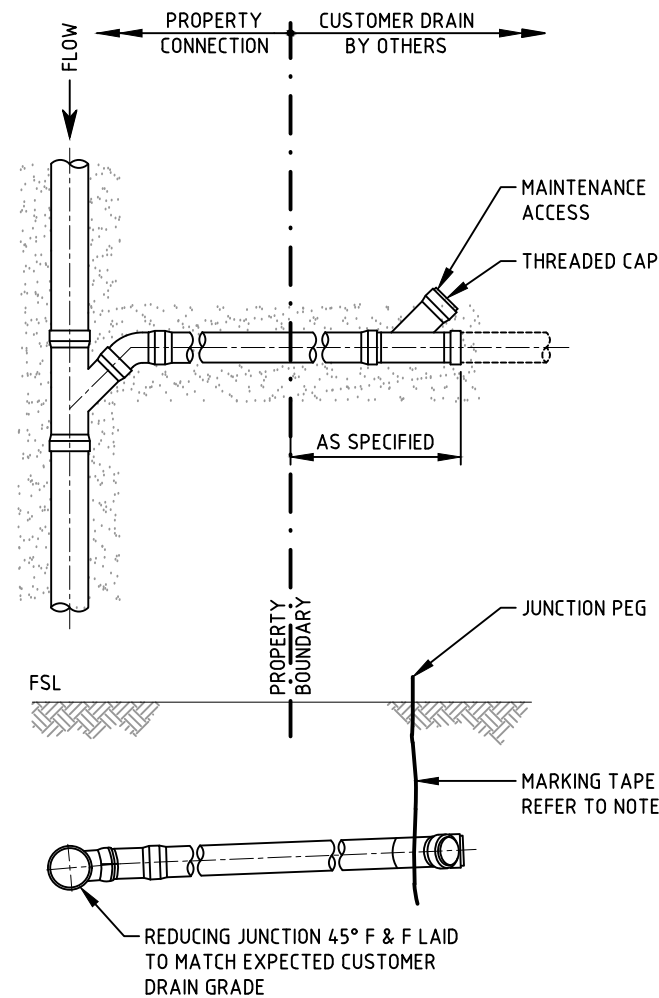
LAY THE TAPE OVER THE EMBEDMENT TO FORM A CONTINUOUS CONNECTION BETWEEN ACCESS COVER FRAMES. STRIP THE ENDS OF THE TAPE TO EXPOSE ITS CONDUCTING WIRES. CONNECT BARE WIRES TO A NUT OR BOLT OF THE ACCESS COVER FRAME TO FORM AN ELECTRICAL CONNECTION.



**TYPICAL RAISED INSPECTION OPENING
(IO) INTERFACE METHOD**

DETAIL NOTES:

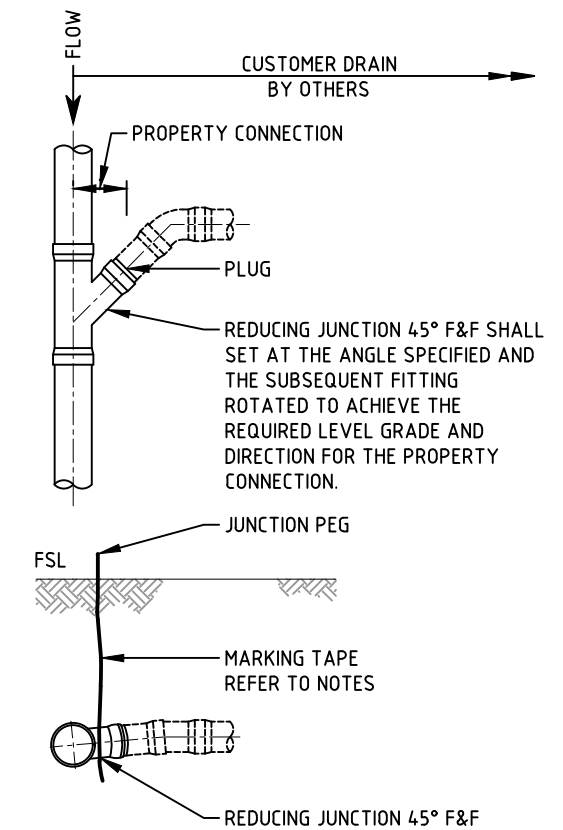
1. FOR THE IO INTERFACE METHOD, PROPERTY CONNECTION SEWERS MUST BE CONSTRUCTED WITH SUFFICIENT HORIZONTAL STRAIGHT PIPES SO THAT THE PROPERTY CONNECTION FITTING IS WHOLLY WITHIN THE LOT TO PROVIDE A POINT OF CONNECTION FOR THE CUSTOMER SANITARY DRAIN.
2. AN IO, CONSTRUCTED AS PART OF COUNCIL'S PROPERTY CONNECTION SEWER, DEFINES THE CHANGE OF OWNERSHIP FROM COUNCIL TO LOT OWNER.
3. THE COUNCIL OWNS THE IO AND THE PROPERTY CONNECTION SEWER DOWNSTREAM OF THE IO. THE LOT OWNER IS RESPONSIBLE FOR PROVIDING AND MAINTAINING THE SANITARY DRAIN UPSTREAM OF THE IO IN ACCORDANCE WITH AS/NZS 3500.2.



**TYPICAL BURIED INTERFACE METHOD -
VARIATION (B)**

DETAIL NOTES:


1. THE POINT OF CONNECTION IS A JUNCTION INSTALLED AT THE END OF A PROPERTY CONNECTION SEWER TERMINATING WITHIN THE PRIVATE LOT. COUNCIL MAY SPECIFY A RODDING POINT TO BE CONNECTED TO THE JUNCTION. COUNCIL OWNS THE PROPERTY CONNECTION SEWER, JUNCTION AND RODDING POINT. THE CUSTOMER IS RESPONSIBLE FOR PROVIDING, CONNECTING AND MAINTAINING AN IO AND SANITARY DRAIN IN ACCORDANCE WITH AS/NZS 3500.2.



**TYPICAL BURIED INTERFACE METHOD -
VARIATION (A)**

DETAIL NOTES:

1. THE POINT OF CONNECTION IS A JUNCTION INSTALLED IN THE SEWER WITHIN THE PRIVATE LOT. THE JUNCTION IS PLUGGED AT THE TIME OF CONSTRUCTION. COUNCIL OWNS THE JUNCTION AND DOWNSTREAM SEWER. THE CUSTOMER IS RESPONSIBLE FOR PROVIDING, CONNECTING AND MAINTAINING AN IO AND SANITARY DRAIN IN ACCORDANCE WITH AS/NZS 3500.2.

				 <p>WINGECARRIBEE SHIRE COUNCIL</p>	DRAWN M. MOLINA	WINGECARRIBEE SHIRE COUNCIL PROPERTY CONNECTION - INSPECTION OPENING AND BURIED INTERFACE METHOD DETAILS			
					SCALE N.T.S.				
ISSUE	AMENDMENTS	DRAWN	DATE			© WSC 2017	DATE: 02/05/2017	PLAN No: WSC-SEW-004	SHEET 04 OF XX