



Figure 1 - Location of Mount Gibraltar Reserve

— Boundary of Mount Gibraltar Reserve

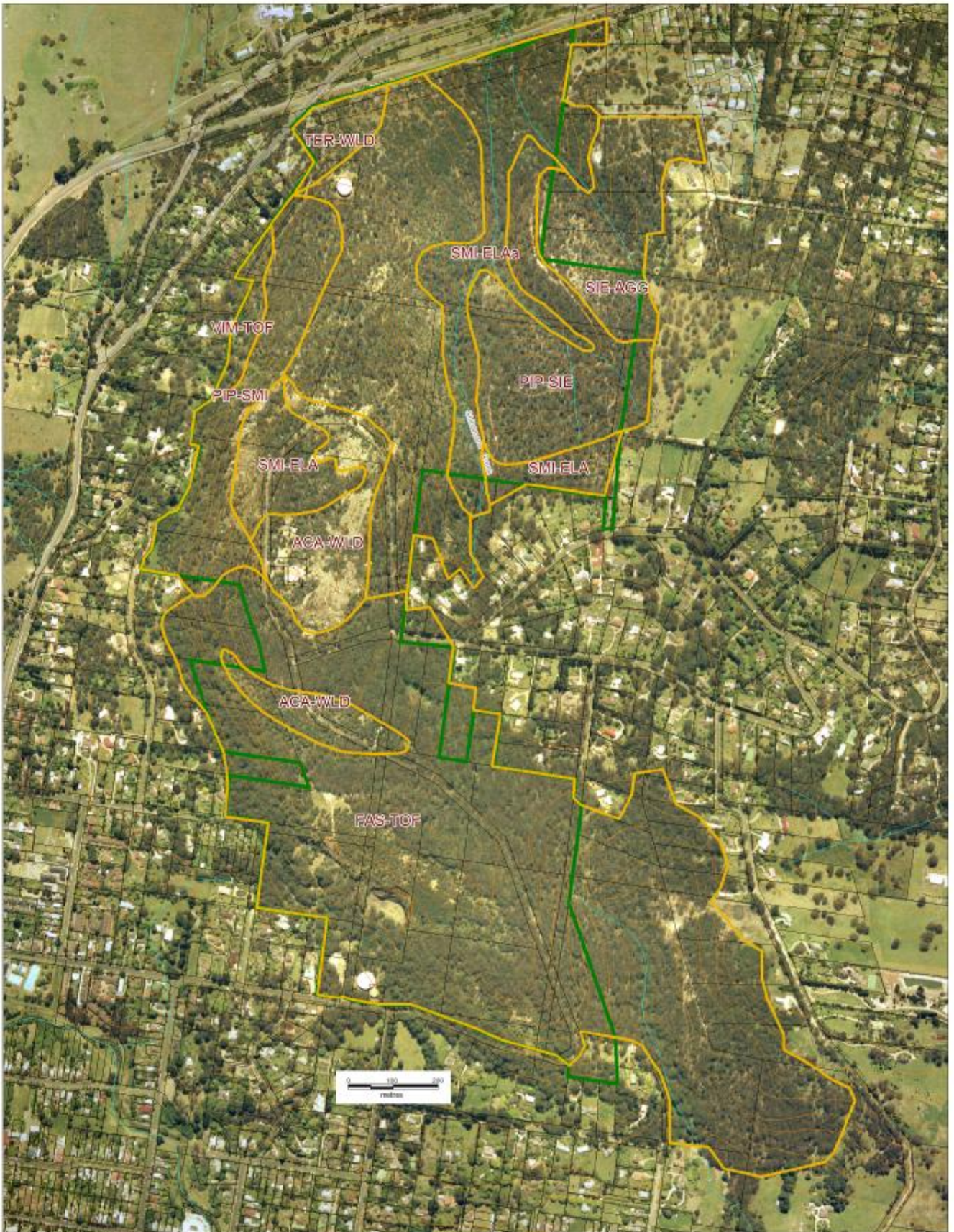
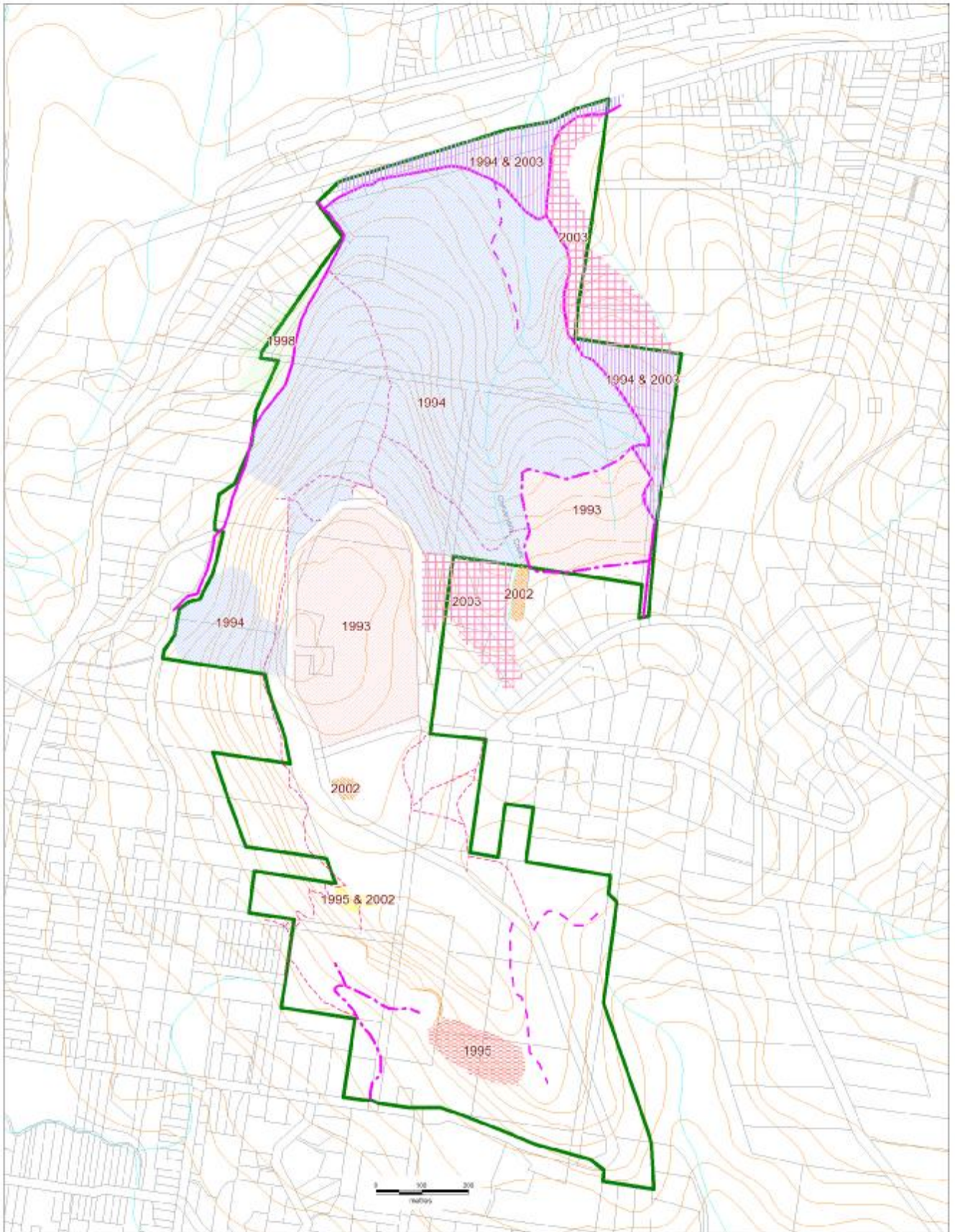


Figure 2 - Vegetation in Mount Gibraltar Reserve

- |  |  |
|--|--|
| FAS-TOF - Brown Barrel Forest                | TER-WLD - Red Gum Woodland                 |
| SMI-ELA - Gully Gum Tall Forest/Forest       | ACA-WLD - Wattle Forest/Woodland/Shrubland |
| VIM-TOF - Manna Gum Forest                   |  |
| PIP-SMI - Peppermint Forest                  |  |
| PIP-SIE - Peppermint - Silvertop Ash Forest  |  |
| SIE-AGG - Silvertop Ash - Stringybark Forest |  |



Note; extent of burns is approximate only

Figure 3 - Fires in Mount Gibraltar Reserve

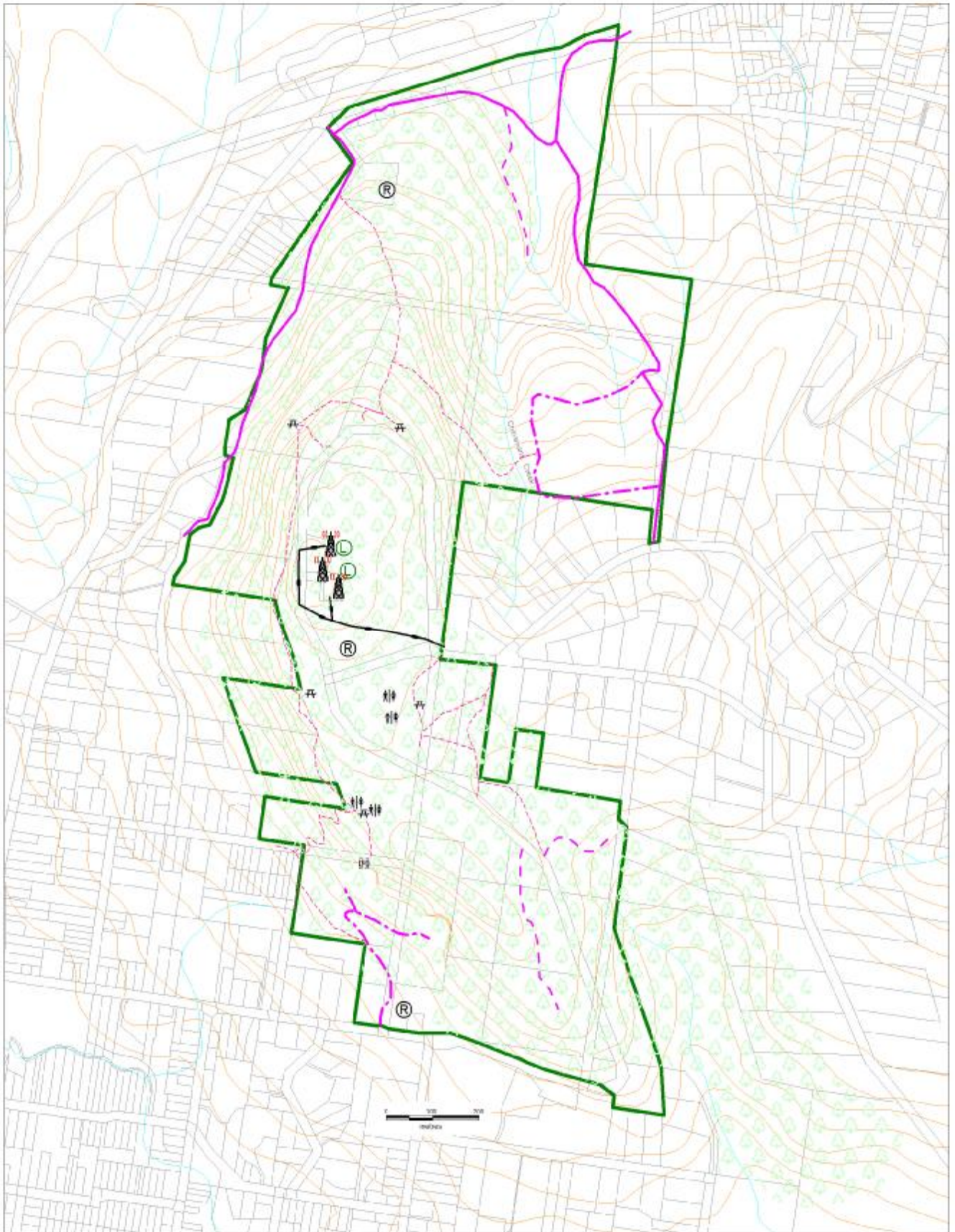










Figure 4 - Assets at Risk from Fire in Mount Gibraltar Reserve

May 2004

- |   |                                      |   |                               |
|---|--------------------------------------|---|-------------------------------|
|  | Mount Gibraltar Forest (approximate) |  | Water reservoir               |
|  | Telecommunication towers             |  | Seats/picnic tables           |
|  | <i>Leptospermum brevipes</i>         |  | Electricity transmission line |
|  | Toilet block                         |  | Viewing platform              |

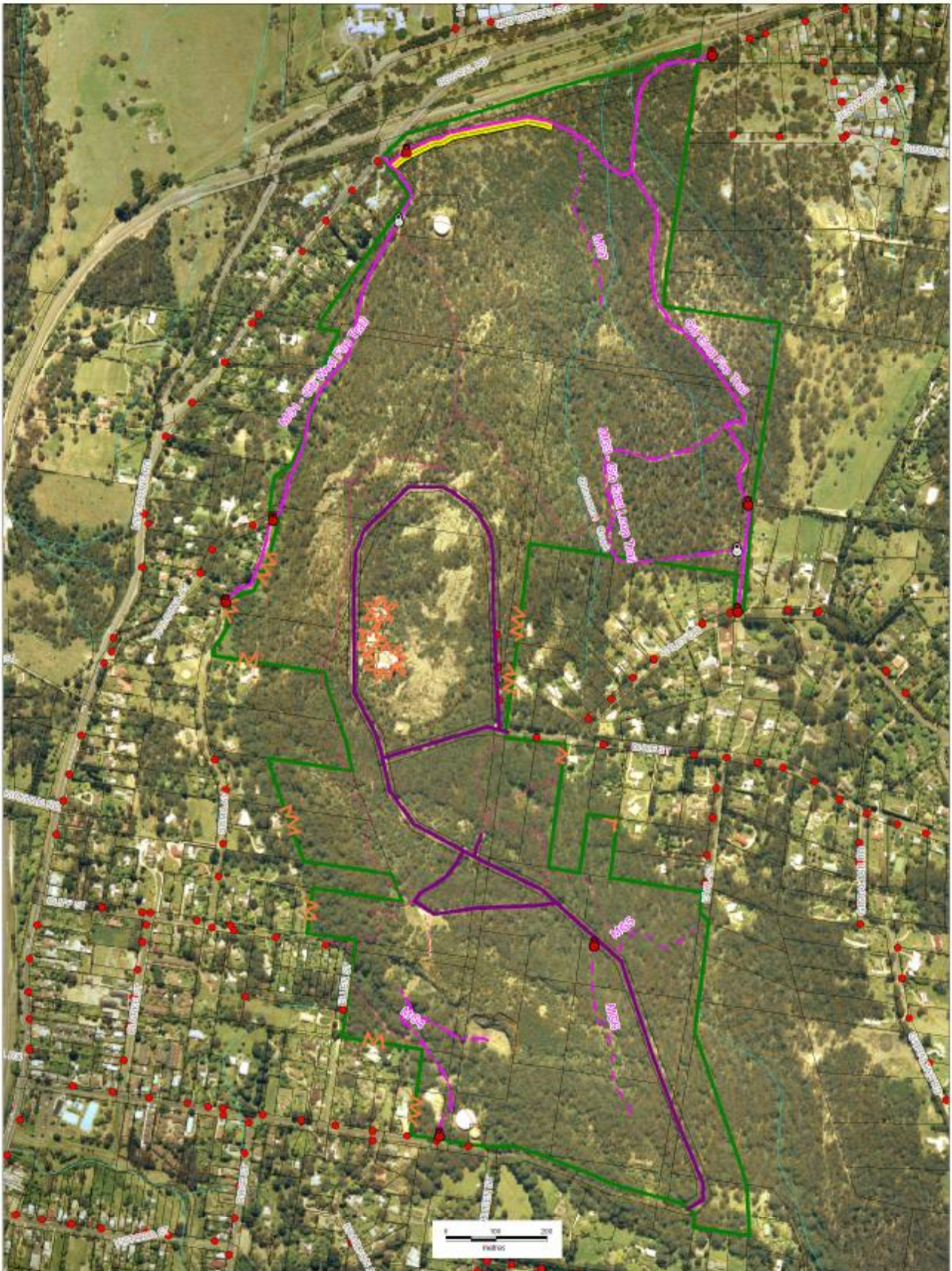
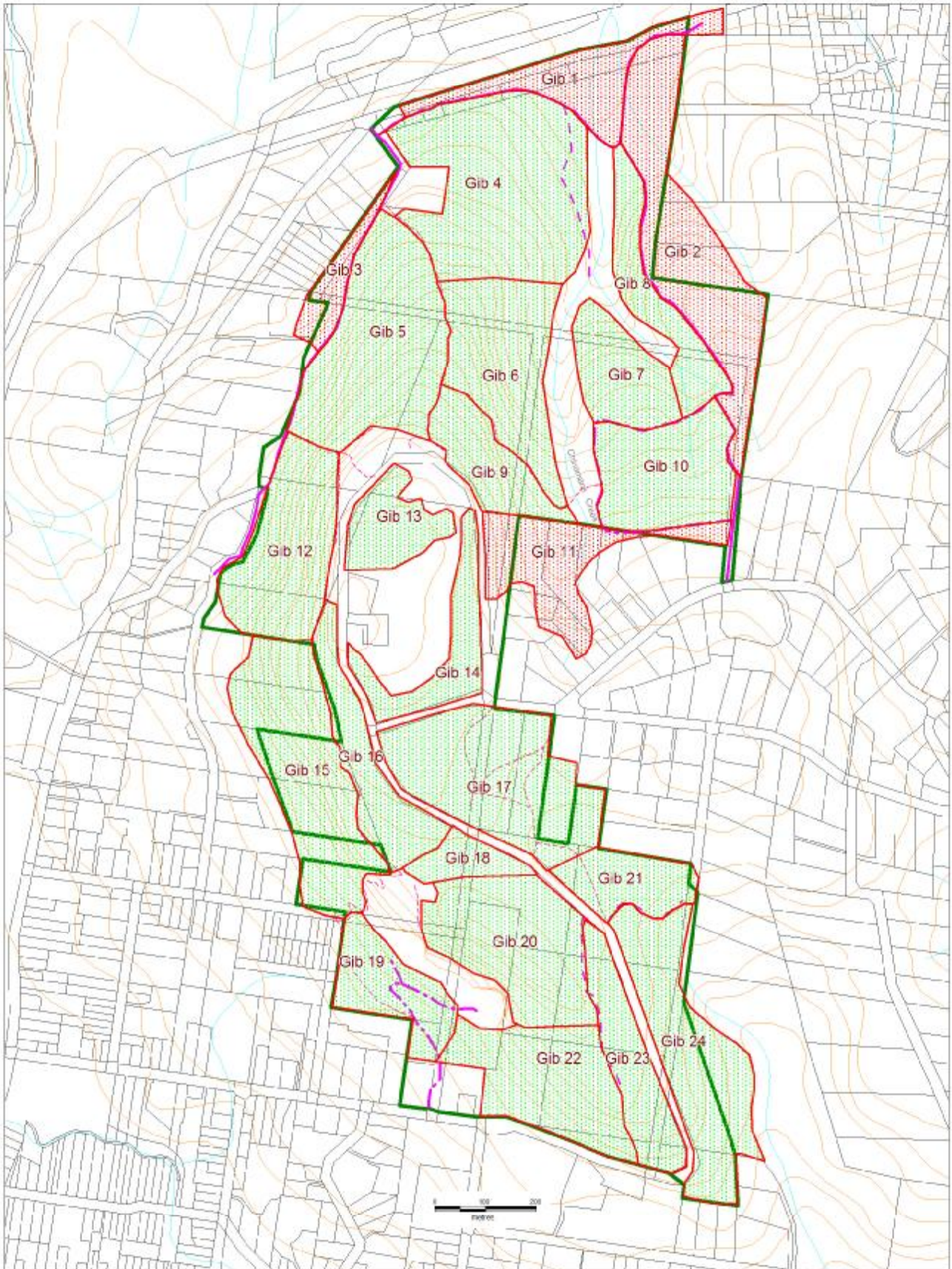


Figure 5 - Fire Trails and Foot Tracks in Mount Gibraltar Reserve

	Primary		Public roads		Locked gates		10 m wide fire break (slashed or burnt)
	Secondary		Foot tracks		Fire hydrants		Asset Protection Zone required
	Dormant						



**Fire Management Units**

-  Strategic Hazard Management
-  Ecosystem Management

Figure 6 - Fire Management Units