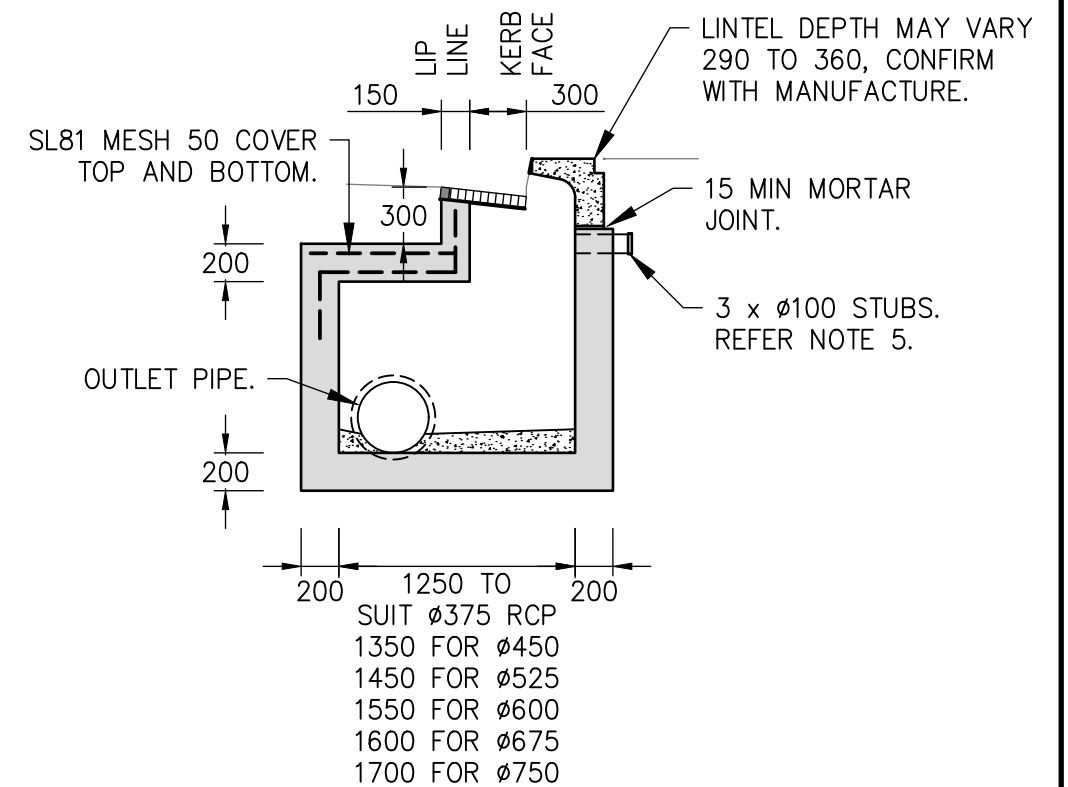
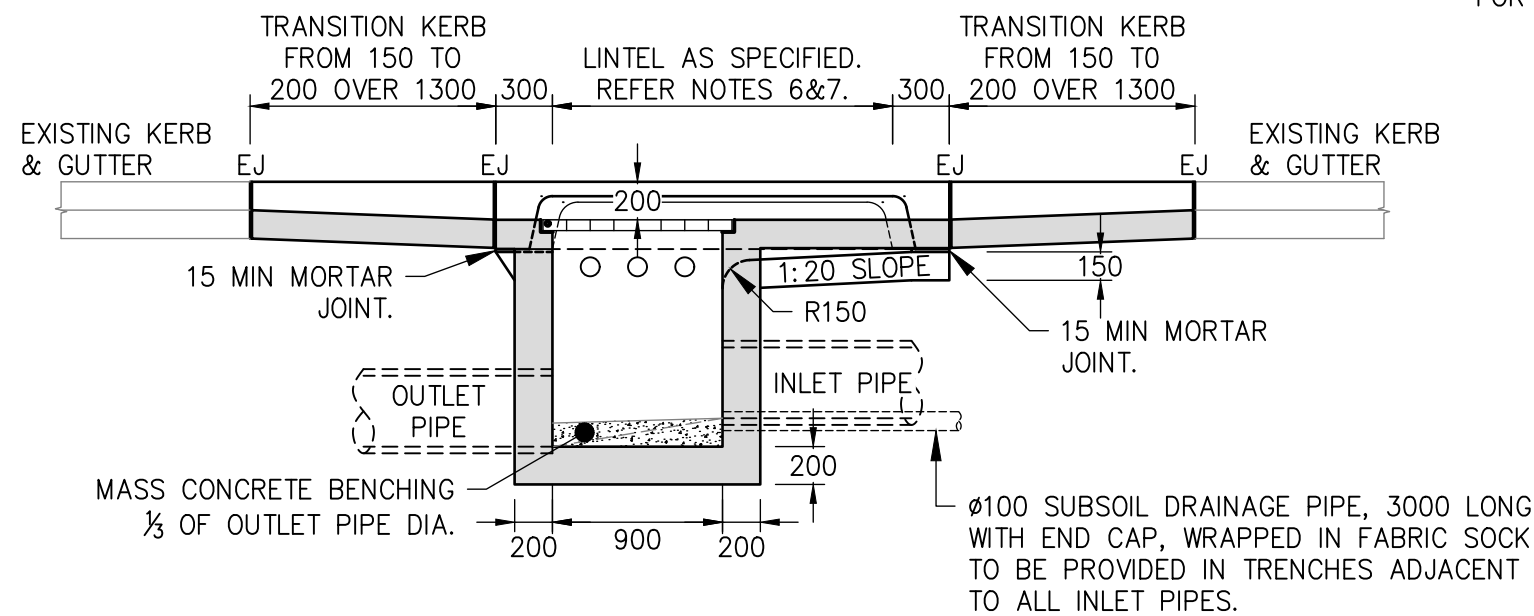


NOTES:

1. DIMENSIONS ARE IN MILLIMETRES.
2. THIS DRAWING APPLIES TO A MAXIMUM PIPE SIZE OF $\phi 750$ AND A MAXIMUM PIT DEPTH OF 2400. PROVIDE STEP IRONS WHERE PIT DEPTH EXCEEDS 1200.
3. REFER TO DRAWING No. SD116 FOR OTHER STANDARD DETAILS WHERE PIT DEPTH OR INTERNAL DIMENSIONS VARY.
4. INSTALL HOT DIPPED GALVANISED, THREE SIDED CLASS D GRATE, SIMILAR TO 'WELDLOK' GG52-0900x0400D-C IN ALL LOCATIONS.
5. PROVIDE THREE (3) x $\phi 100$ H.D.UPVC INLET PIPES 300 LONG WITH CAPPED ENDS FOR FUTURE HOUSE CONNECTIONS.
6. NOMINAL LINTEL LENGTH IS THE OPENING LENGTH, AND SIZED FOR FULL DESIGN INFLOW. NEGLECT GRATE CAPACITY.
7. LINTEL TO BE POSITIONED AND SET AFTER CONSTRUCTION OF STANDARD 150mm KERB AND GUTTER OR ROLL TOP KERB.
8. INCREASE PIT CHAMBER FOR LARGER PIPES. FROM LINTEL WALL, EXTEND PIT TOWARDS ROAD WITH STEEL REINFORCING IN TOP DECK AS SHOWN.
9. THE USE OF PRECAST PITS IS NOT PERMITTED IN COUNCIL'S ROAD RESERVES AND CAR PARKS.
10. MINIMUM COMPRESSIVE STRENGTH OF CONCRETE TO BE $F'c = 25MPa$ AT 28 DAYS.
11. FORTY EIGHT (48) HOURS NOTICE IS TO BE GIVEN PRIOR TO PLACING OF CONCRETE TO ALLOW FOR INSPECTION BY COUNCIL'S OFFICER.



A	REVISED ISSUE	TZ	25/01/21
ISSUE	AMENDMENTS	DRAWN	DATE



DRAWNTZ..

SCALE1:40.

SHEET SIZE: **A3**

APPROVED

[Signature]

GROUP MANAGER
INFRASTRUCTURE SERVICES
D.L.

WINGECARRIBEE SHIRE COUNCIL			
STANDARD DRAWING – KERB INLET PIT FOR PIPES LAID ADJACENT TO K&G			
DATE: 25/01/2021	PLAN No: SD140	SHEET 1 OF 1	ISSUE A