
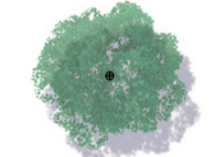
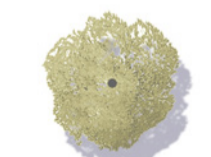



**NOTES**

1. NEW PLAYGROUND: located on flatter section of the park, close to accessible parking and future amenities location.
2. EXISTING PLAYGROUND: to be removed once new play area is completed. Area to be incorporated into off-leash area.
3. ACCESSIBLE PARKING: Upgrade to existing parking area to provide accessible spaces close to proposed playground and amenities.
4. PARKING UPGRADES: Potential future upgrade to parking along Spencer Street
5. ROAD UPGRADES: Potential upgrades to provide kerb and gutter to Lovelle and Spencer Streets
6. LOVELLE STREET: Potential upgrades to Lovelle Street, including kerb and gutter, parking, accessible parking and turning circle at end of street.
7. OFF-STREET PARKING: Potential for off-street parking area for park users and off-leash area. Retain existing maintenance access to golf course.
8. ENTRY: Accessible entry from carpark, links to playground and amenities.
9. AMENITIES: New accessible amenities. Stage 2 works
10. PICNIC AREA: Upgrade existing picnic settings and shelters, with additional accessible setting located at playground.
11. SEATING: Formal and informal seating for park users, with additional seats, stools and picnic settings complemented with informal seating on boulders and logs
12. SITE FURNITURE: New and upgraded bins, drinking fountain with bottle tap and hitching post.
13. EXISTING MAINTENANCE ACCESS: Relocated to Lovelle Street.
14. MAINTENANCE ACCESS: New access gate for maintenance.
15. OFF-LEASH AREA: Retain existing off-leash area including, entries and seating. Widen entry zone off Lovelle Street and provide additional seat. Retain or upgrade water bowl at northern entry, add water bowl to upper park.
16. NEW FENCE: New fence to expanded off-leash entry zone.
17. EXISTING FENCE: To be relocated to expanded off-leash area
18. EXISTING AMENITIES: To be demolished once new amenities building is installed. Water retained to allow for drinking fountain and dog drinking bowl
19. POTENTIAL FLOOD MANAGEMENT FACILITY

**LEGEND**

-  Site boundary
-  Existing trees to be retained
-  Proposed trees
-  Trees to be removed

PROJECT  
**SEYMOUR PARK MASTERPLAN**

CLIENT  
**WINGECARRIBEE SHIRE COUNCIL**

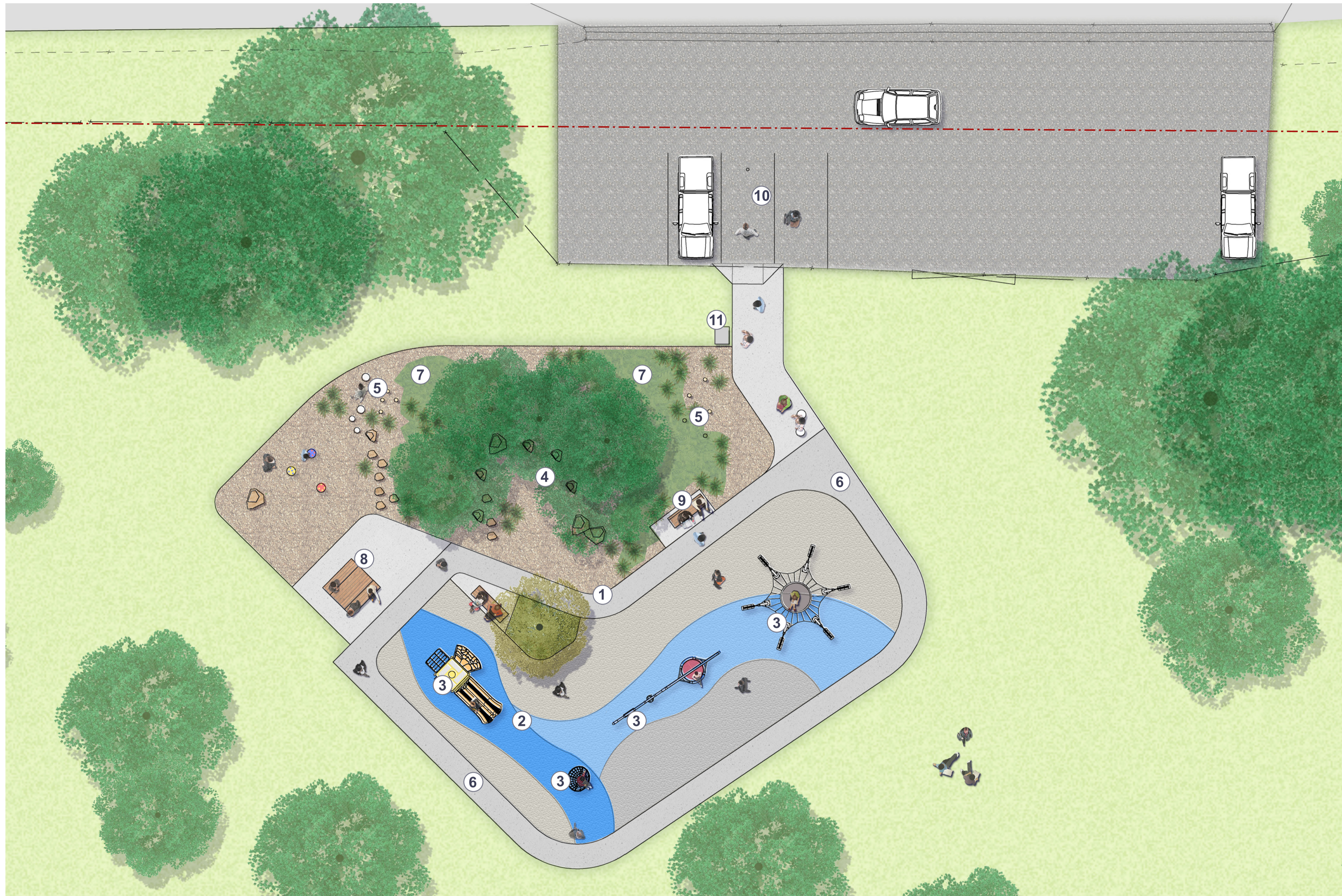
DRAWING  
**MASTERPLAN**

DRAWING No. ISSUE DRAWN DATE  
**MP-1923-01 E jc/hp 14.05.2020**

Scale 0 4 8 16 24m  
1:500@A1  
1:1000@A3





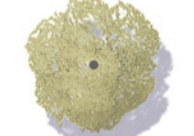
THIS DRAWING SHOULD BE READ IN CONJUNCTION WITH ALL RELEVANT CONTRACTS, SPECIFICATIONS, REPORTS AND DRAWINGS.



## NOTES

1. ACCESSIBLE PLAYGROUND: New playground with accessible entry and nearby accessible parking. Adjacent to future accessible amenities.
2. SOFTFALL: Rubber softfall provides access to play elements, with mulch softfall to remaining area
3. PLAY ACTIVITIES: Informal and formal activities including climbing, sliding, swinging and spinning.
  - Net climber
  - Swings with basket, strap & toddler seats.
  - Spinning Basket
  - Junior play structure with slide, steps and climber
4. NATURE PLAY: Utilising the existing trees to provide play opportunities, boulders, stepping stones and logs provide for imaginative play.
5. POLES: Pole feature provides accent to entry and elements for informal play.
6. LOOP PATH: The playground is edged with a 1200mm wide accessible path forming a loop for young riders.
7. PLANTING: Low planting complements existing trees and provides separation between amenities and play.
8. PICNIC SETTING: Accessible picnic setting adjacent to play zone and allowing easy access to carpark and amenities.
9. SEATING: Variety of seating including benches, seats with backs and stools.
10. ACCESSIBLE PARKING: Provide two accessible spaces with 2 coat bitumen seal.
11. GARBAGE BIN

## LEGEND

-  Site boundary
-  Existing trees to be retained
-  Proposed trees

## Precedent Images



Spinning basket



Junior play structure with slides



Swing with basket



Net climber



Mushrooms in nature play



Poles



Nature play

PROJECT  
**SEYMOUR PARK MASTERPLAN**

CLIENT  
**WINGECARRIBEE SHIRE COUNCIL**

DRAWING  
**STAGE 1 WORKS - PLAYGROUND**

DRAWING No.	ISSUE	DRAWN	DATE
MP-1923-02	D	jc/hp	14.05.2020

 Scale: 0 1 5m  
1:100@A1  
1:200@A3



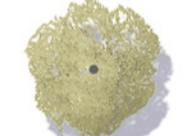

THIS DRAWING SHOULD BE READ IN CONJUNCTION WITH ALL RELEVANT CONTRACTS, SPECIFICATIONS, REPORTS AND DRAWINGS.



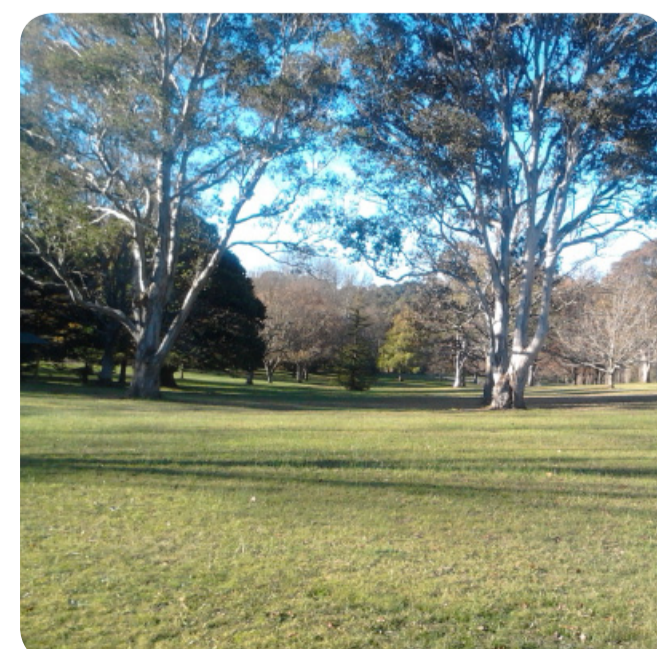
## NOTES

1. ACCESSIBLE ENTRY: Entry links via accessible path to playground and accessible amenities
2. NATURE PLAY EXTENDS: Additional planting extends nature play area.
3. PATH: 1200mm wide accessible path to amenities forms additional loop path and link to play area.
4. PLANTING: Low planting complements existing trees and provides separation between amenities and play. Tree provides shade to picnic and seating.
5. AMENITIES: With one accessible cubicle and one ambulant. Allow to provide services connections and conduits where required during Stage 1 playground works.
6. DRINKING FOUNTAIN: Accessible drinking fountain close to amenities and playground.
7. HITCHING POST: Shaded location for waiting dogs, set away from play zone.

## LEGEND

-  Site boundary
-  Existing trees to be retained
-  Proposed trees
-  Trees to be removed

## Precedent Images



Maintain site character



Upgrade existing picnic settings



Expanded off-leash dog area



New drinking fountain



Low planting



Accessible parking



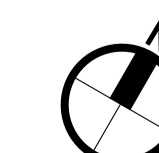
New amenities block

PROJECT  
**SEYMOUR PARK MASTERPLAN**

CLIENT  
**WINGECARRIBEE SHIRE COUNCIL**

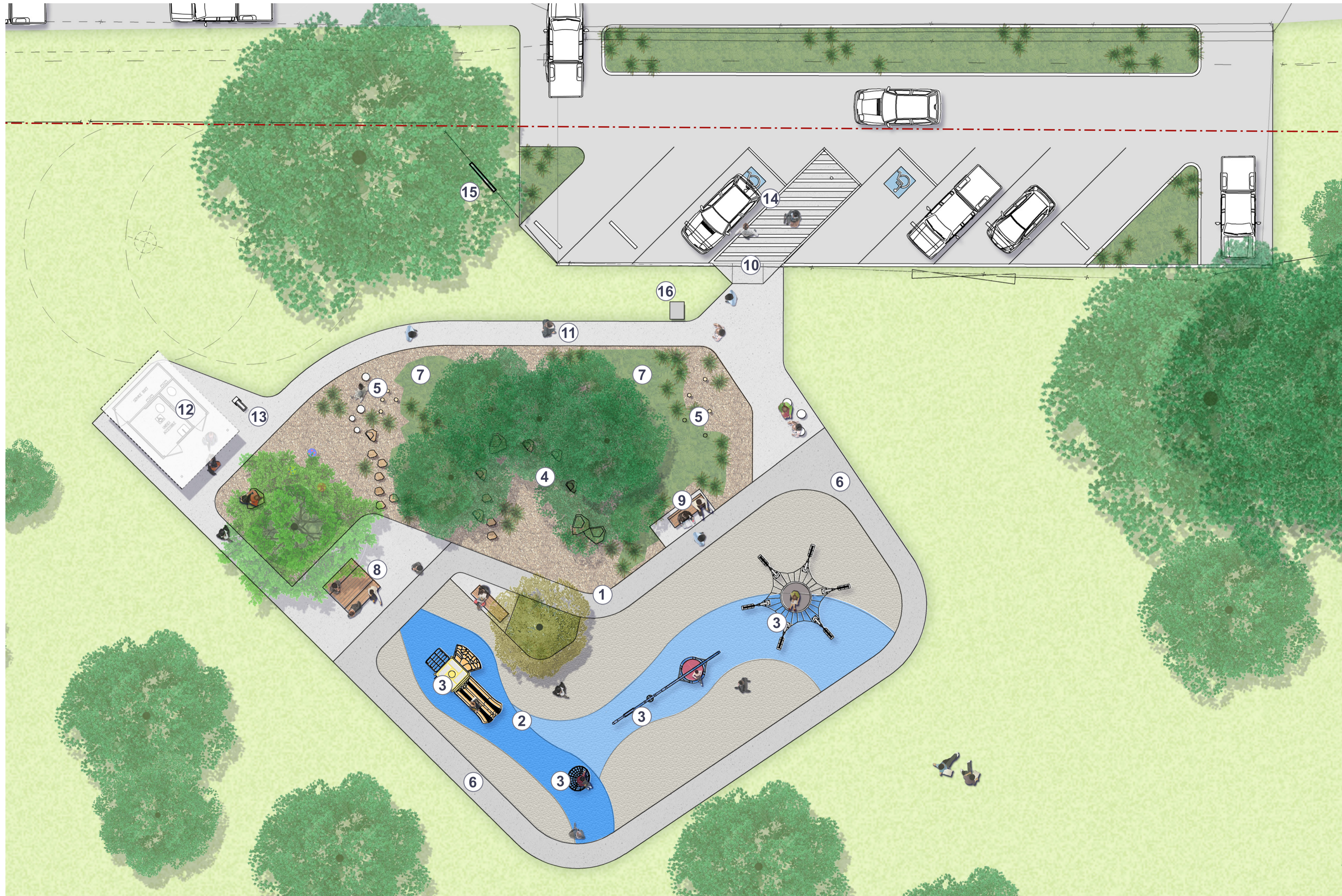
DRAWING  
**STAGE 2 WORKS - AMENITIES**

DRAWING No. ISSUE DRAWN DATE  
**MP-1923-03 D jc/hp 14.05.2020**



Scale 0 1 5m  
1:100@A1  
1:200@A3


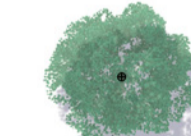
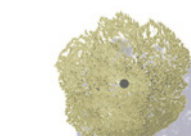

THIS DRAWING SHOULD BE READ IN CONJUNCTION WITH ALL RELEVANT CONTRACTS, SPECIFICATIONS, REPORTS AND DRAWINGS.



## NOTES

1. **ACCESSIBLE PLAYGROUND:** New playground with accessible entry and nearby accessible parking. Adjacent to accessible amenities.
2. **SOFTFALL:** Rubber softfall provides access to play elements, with mulch softfall to remaining area
3. **PLAY ACTIVITIES:** Informal and formal activities including climbing, sliding, swinging and spinning.
  - Net climber
  - Swings with basket, strap and toddler seats.
  - Spinning Basket
  - Junior play structure with slide, steps and climber
4. **NATURE PLAY:** Utilising the existing trees to provide play opportunities. Boulders, stepping stones and logs provide for imaginative play.
5. **POLES:** Pole feature provides accent to entry and elements for informal play.
6. **LOOP PATH:** The playground is edged with a 1200mm wide accessible path forming a loop for young riders.
7. **PLANTING:** Low planting complements existing trees and provides separation between amenities and play. Tree provides shade to picnic and seating.
8. **PICNIC SETTING:** Accessible picnic setting adjacent to play zone and allowing easy access to carpark and amenities.
9. **SEATING:** Variety of seating including benches, seats with backs and stools
10. **ACCESSIBLE ENTRY:** New accessible parking links to playground and adjacent accessible amenities.
11. **PATH:** 1200mm wide accessible path to amenities forms additional loop path and link to play area.
12. **AMENITIES:** With one accessible cubicle and one ambulant.
13. **DRINKING FOUNTAIN:** Accessible drinking fountain located adjacent to path.
14. **ACCESSIBLE PARKING:** Upgrade to existing parking area to provide formal parking area with accessible spaces close to playground and amenities.
15. **HITCHING POST:** Shaded location for waiting dogs, set away from play zone.
16. **GARBAGE BIN**

## LEGEND


-  Site boundary
-  Existing trees to be retained
-  Proposed trees
-  Trees to be removed

PROJECT  
**SEYMOUR PARK MASTERPLAN**

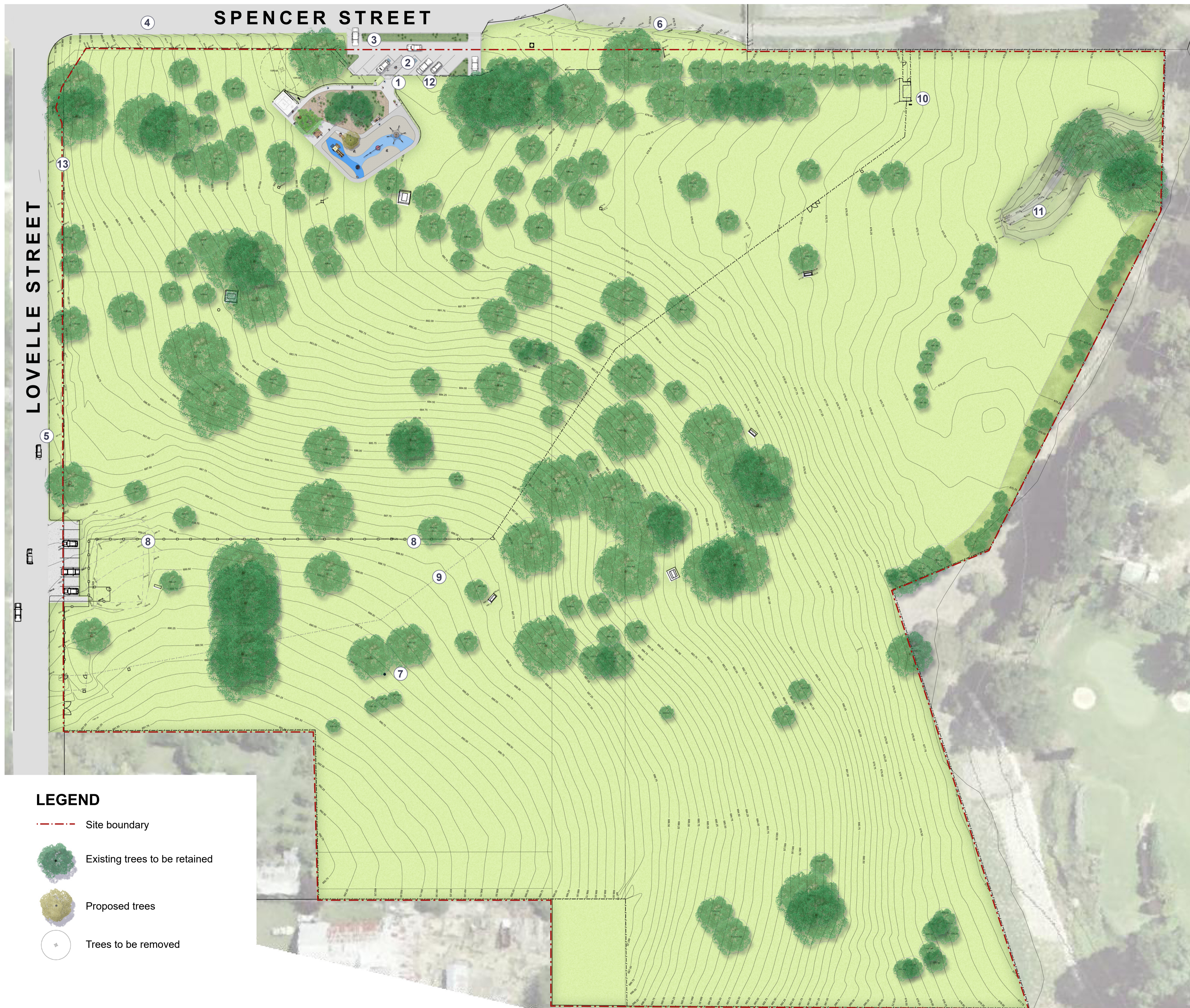
CLIENT  
**WINGECARRIBEE SHIRE COUNCIL**

DRAWING  
**DETAIL PLAN - STAGES 1, 2 & 3**

DRAWING No.	ISSUE	DRAWN	DATE
<b>MP-1923-04</b>	<b>D</b>	<b>jc/hp</b>	<b>14.05.2020</b>

 Scale: 0 1 5m  
1:100@A1  
1:200@A3



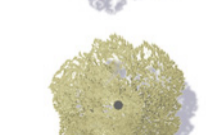

THIS DRAWING SHOULD BE READ IN CONJUNCTION WITH ALL RELEVANT CONTRACTS, SPECIFICATIONS, REPORTS AND DRAWINGS.



## NOTES

1. ACCESSIBLE ENTRY: New accessible parking located at accessible entry links to playground and adjacent accessible amenities with accessible pathways.
2. ACCESSIBLE PARKING: Upgrade to existing parking area to provide accessible spaces close to proposed playground and amenities.
3. PARKING UPGRADES: Potential future upgrade to parking along Spencer Street
4. ROAD UPGRADES: Potential upgrades to provide kerb and gutter to Lovelle and Spencer Streets
5. LOVELLE STREET: Potential upgrades to Lovelle Street, including kerb and gutter, parking, accessible parking and turning circle at end of street.
6. OFF-STREET PARKING: Potential for off-street parking area for park users and off-leash area. Retain existing maintenance access to golf course.
7. OFF-LEASH AREA: Retain existing off-leash area including, entries and seating. Widen entry zone off Lovelle Street and provide additional seat. Retain or upgrade water bowl at northern entry, add water bowl to upper park.
8. NEW FENCE: New fence to expanded off-leash entry zone.
9. EXISTING FENCE: To be relocated to expanded off-leash area
10. EXISTING AMENITIES: To be demolished once new amenities building is installed. Water retained to allow for dog drinking bowl
11. POTENTIAL FLOOD MANAGEMENT FACILITY
12. EXISTING MAINTENANCE ACCESS: Relocated to Lovelle Street.
13. MAINTENANCE ACCESS: New access gate for maintenance.

## LEGEND

-  Site boundary
-  Existing trees to be retained
-  Proposed trees
-  Trees to be removed

PROJECT  
**SEYMOUR PARK MASTERPLAN**

CLIENT  
**WINGECARRIBEE SHIRE COUNCIL**

DRAWING  
**STAGE 3 - FUTURE WORKS**

DRAWING No.	ISSUE	DRAWN	DATE
MP-1923-05	B	jc/hp	15.05.2020



0 4 8 16 24m  
Scale  
1:500@A1  
1:1000@A3

THIS DRAWING SHOULD BE READ IN CONJUNCTION WITH ALL RELEVANT CONTRACTS, SPECIFICATIONS, REPORTS AND DRAWINGS.